



## Smart Sinus Ups

# T22b / 2000VA / 1400W

- Pure Sine wave output
- Smart technology
- Real time and calendar
- Super charger (Adjustable battery charger)
- Wide input voltage operation range
- High quality device
- Long lifetime without reparation
- 5 year warranty

### Purpose



IT sector, offices, industry, medical, server rooms...

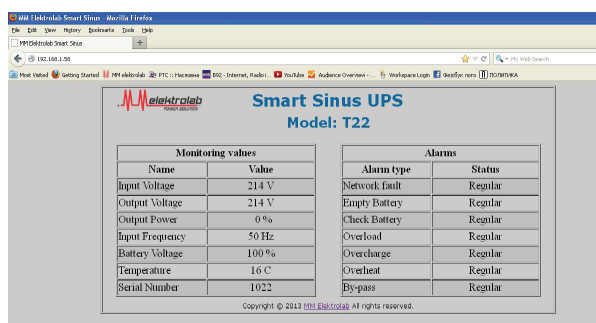
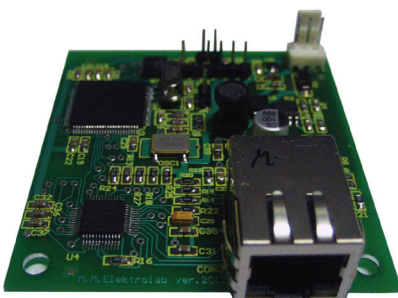


## DESCRIPTION:

- Smart Sinus Ups is high quality device, generates a pure Sinusoidal voltage at the output 230V~ +/-5%. This ups model does not have an internal batteries, two external (24V) is connected, battery capacity-option.
- Carefully selected high quality components from well-known manufacturers.
- Super-charger digital adjustable charger, min 9Ah to max 200Ah with IU characteristics and temperature compensation. Easy to add external batteries for extended autonomy.
- Smart technology enables high reliability, fully automated and independent system.
- Long life -UPS life without repairs over 15 years (not applicable for batteries).
- Wide input voltage operation range (min 150V~ - max 290V~ without degrading power).
- Lots of quality protections.
- Saving event+log alarms in real time.
- Unique concept of Service Support, the purchase of our UPS devices gives you special software through which our product is directly connected via the Internet to the service mail of our company.
- Advanced UPS monitoring software that has the unique concept of generating its own local area network between a UPS device and one or more computers / servers.
- In situations where the mains voltage disappears and the battery is discharged or any alarms occur, UPS before shutting down, executes at the same time shutting down operating systems on all computers / servers, then the UPS device shuts off. In the event of a power failure or any alarm, the UPS sends alerts on monitors of all computers.



- An option of installing a LAN card with SNMP and HTTP protocols, which allows real-time monitoring of UPS devices anywhere in the country and abroad.

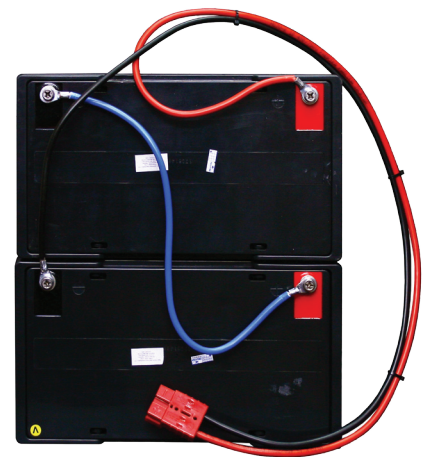
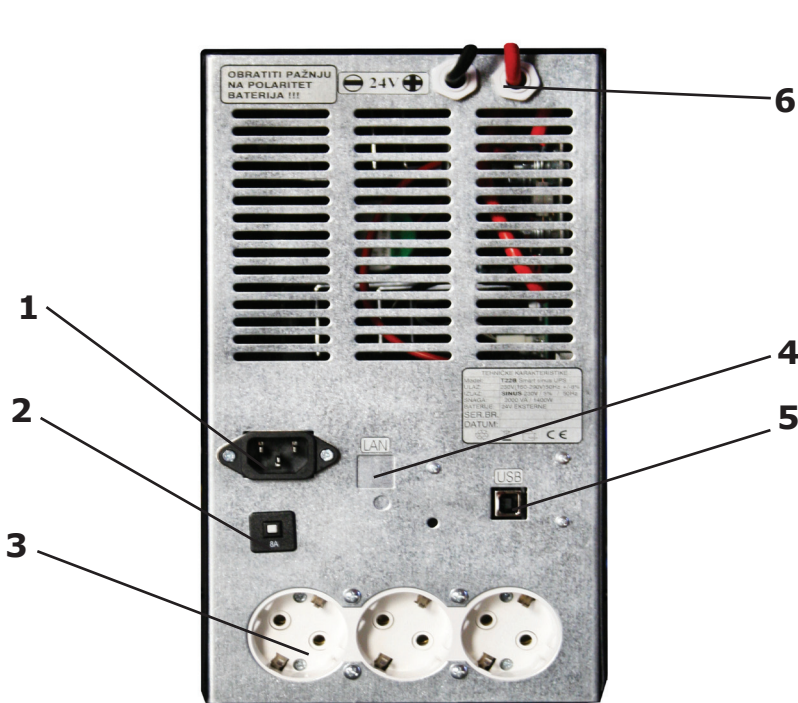


**TECHNICAL DATA:**

|                           |   |
|---------------------------|---|
| <b>MODEL:</b>             | <b>T22b</b>   |
| Power:                    | 2000 VA /1400 W   |
| <b>INPUT:</b>             |   |
| Nominal Voltage:          | 230V (min 150V – max 290V without degrading power)  |
| Frequency:                | 50Hz +/- 10 %   |
| <b>OUTPUT:</b>            |   |
| Connection:               | Schuko CEE7 x 3   |
| Nominal Voltage:          | 230V +/- 5 %  |
| Wave form:                | Pure Sine wave  |
| Frequency:                | 50Hz +/- 0,01%  |
| Transfer time:            | 0 msec  |
| By-pass:                  | NO  |
| Efficiency:               | 92% (Load=100%)   |
| Topology:                 | Double conversion   |
| <b>PROTECTIONS:</b>       |   |
| Protections::             | Short circuit at the output / Overload / Overcharge batteries / Deep batteries discharge / Overvoltage-Undervoltage on the UPS Input / Overvoltage-Undervoltage on the UPS Output / Overheating.  |
| <b>INDICATOR:</b>         |   |
| Front panel:              | Alfa-numeric display 4x20 character with back light, measurement:<br>-Input/Output voltage,Input frequency,Batteries voltage (V), Charging / Discharging battery %,Output power (VA/%), Work time on batteries,Ups status,Log alarm,Event alarm,Real time-calendar,Charge current battery,Ambiental and Heatsink temperature.<br>-Button On-Off , Parameter setting |
| <b>BATTERIES:</b>         |   |
| Battery number and model: | Two external (24V) , battery capacity-option  |
| Charger:                  | Digital adjustable, min 9Ah to max 200Ah with IU characteristics and temperature compensation.  |
| Expanding work autonomy:  | Yes   |
| Charging time:            | 6-8h  |
| Autonomy:                 | Option-dependending on battery capacity.  |
| <b>COMMUNICATION:</b>     |   |
| Communication:            | USB / Option LAN (+Software)  |

| SAFETY STANDARDS:            |  |
|------------------------------|--|
| LVD conformity :             | EN 60950                               |
| EMC conformity:              | EN 62040-2:2006                        |
| DIMENSIONS:                  |  |
| Height:                      | 32 cm                                  |
| Widht:                       | 17 cm                                  |
| Depth:                       | 54 cm                                  |
| GENERAL:                     |  |
| Green power:                 | Yes, adjustable                        |
| Self test battery:           | Yes (10-90days and 1-60min adjustable) |
| Voltage distortion:          | <3%                                    |
| Operating temperature range: | -20°C to +65°C                         |
| IP class:                    | IP 21                                  |
| Safety mark:                 | CE                                     |
| Weight:                      | 24 kg                                  |
| WARRANTY:                    |  |
| Warranty:                    | Ups 5 years                            |

## REAR SIDE:



1. Power connector 220 VAC
2. Power fuse
3. Connection Schuko CEE7 x 3
4. LAN communication
5. USB communication
6. Wires for connection of external batteries

**elektrolab**  
POWER SOLUTION  
[www.ups-napajanja.rs](http://www.ups-napajanja.rs)

Džona Kenedija 11  
Belgrade - Kaluđerica  
Serbia  
+381 11 34 13 442  
[office@mmelektrolab.com](mailto:office@mmelektrolab.com)